

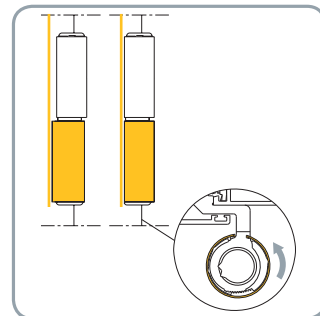
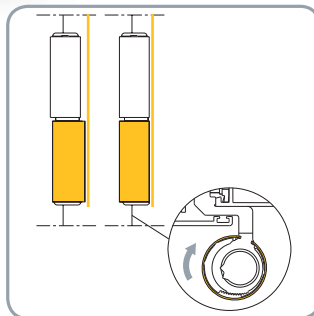
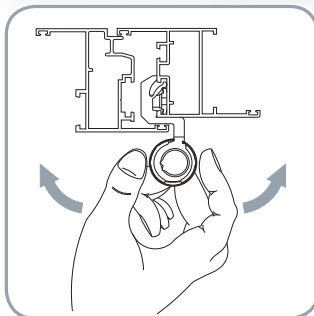
SUMMA+ AXIAL. BEAUTY IS ALWAYS IN LINE WITH STURDINESS.

If three different adjustments are not enough, **Summa+ Axial** is the hinge that best suits your needs. Thanks to its innovative cover, you can line up the hinge bodies, simply and naturally, even after the adjustment. **Summa+ Axial** is also extremely sturdy: the semi-spherical pin in stainless steel with thrust effect ensures a better weight distribution, while the stainless steel counter plates offer the highest resistance to corrosion and a more solid fastening in time.



NEW HINGE FOR SUMMA+ AXIAL DOORS.

- Three easy and independent adjustments: lateral adjustment with the cam system (+/-1,6 mm), in height thanks to the vertical dowel pin (-1/+3 mm), gasket pressure by means of the eccentric bushing (0/-0,5 mm).
- Quick coupling system to the profile so that it can be installed even with the door already installed.
- For all the main profile series.
- 2 hinges = 100 kg - 3 hinges = 120 kg
- Verified in accordance with European standard EN 1935:2002.



The outer cover trim allows you to line up the hinge bodies after the adjustment.



American Douglas Metals
phone: 1-800-428-0023 / 716-877-5257
americandouglasmetals.com



HARDWARE FOR WINDOWS AND DOORS IN ALUMINIUM
Quality and innovation for closing systems
Torino - Italy
export@savio.it mdebos@savio.it **savio.it**